

# AG15 SERIES ARENA GRADERS

HP REQUIRED  
18-65 HP

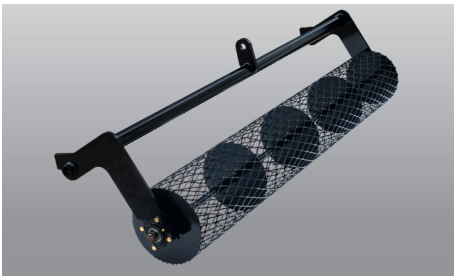
HITCH  
Cat. 1

DIRTWORKING



## Simple, efficient.


Land Pride's AG15 Series Arena Grader is an entry level arena grader for hobbyists and enthusiasts. The Cat 1 hitch is quick hitch compatible and ties into a 2" x 2" square tube frame. The end tubes are 2" x 3". The S-tines feature replaceable tips. Behind the two rows of S-tines is a five-position leveling bar to smooth the soil. The job is finished with either a pipe or mesh roller to break clods and fluff the soil. The working depth is 4" and is set by a simple ratchet handle, a Land Pride exclusive feature.



Finish your job with either a pipe roller which will provide uniform surface, while the mesh roller provides uniformity as well as a smoother finish.

Working depth is 4" and is set by a simple ratchet handle, a Land Pride exclusive.



	AG1560	AG1572	AG1584
<b>Horsepower</b>	18-45 HP	18-55 HP	18-65 HP
<b>Hitch</b>	Cat. 1		
<b>Working Width</b>	60"	72"	84"
<b>Working Depth</b>	4"		
<b>Depth Control</b>	Ratchet Jack		
<b>Frame</b>	2x2 Square Tubing Frame		
<b>S-Tines</b>	Replaceable Tips		
<b>Rolling Basket</b>	Adjustable, Mesh or Pipe		
<b>Leveling Bar</b>	Adjustable		
<b>Color</b>			

**QUICK HITCH**  
SYSTEM